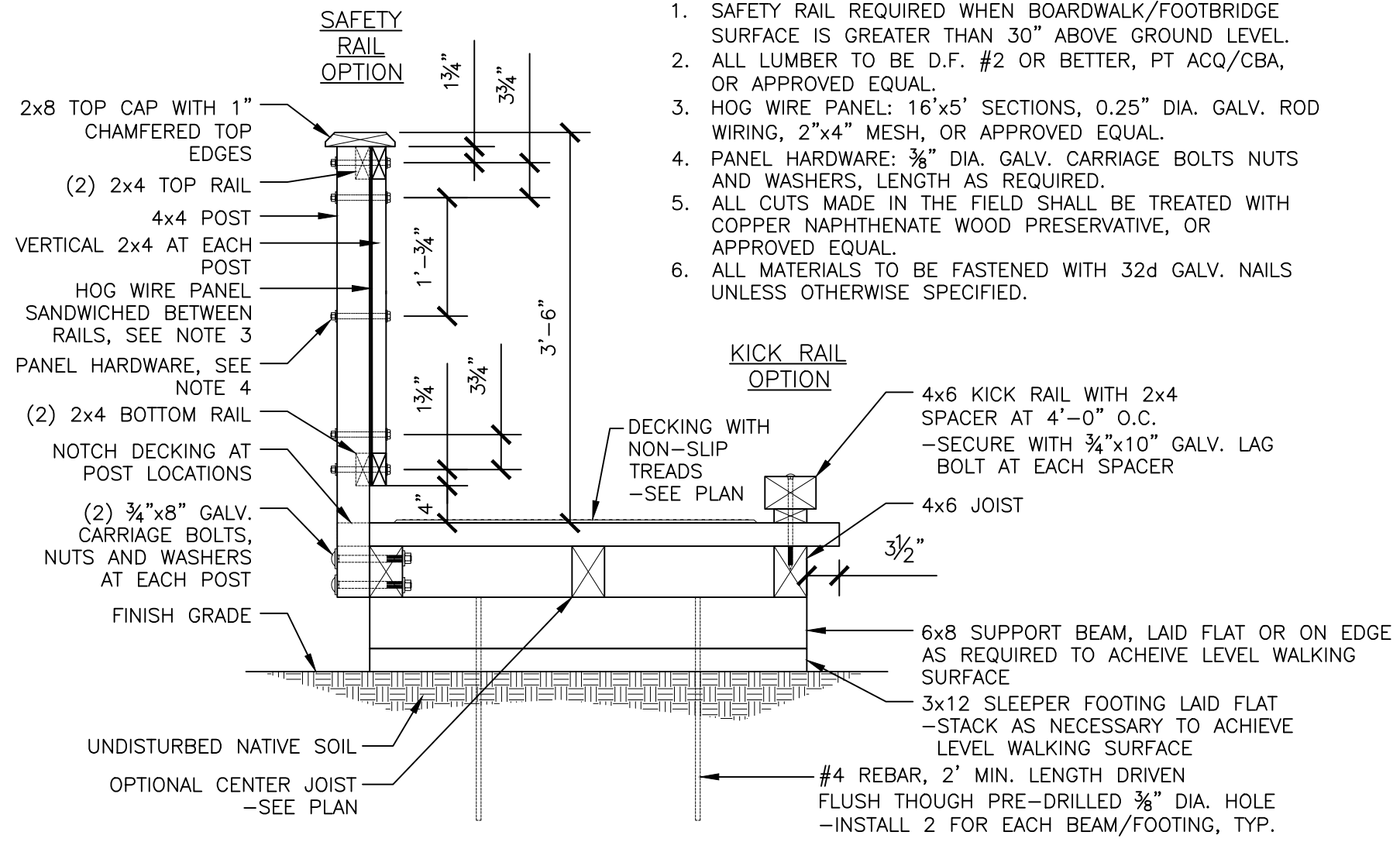


**NOTES:**

1. SAFETY RAIL REQUIRED WHEN BOARDWALK/FOOTBRIDGE SURFACE IS GREATER THAN 30" ABOVE GROUND LEVEL.
2. ALL LUMBER TO BE D.F. #2 OR BETTER, PT ACQ/CBA, OR APPROVED EQUAL.
3. HOG WIRE PANEL: 16'x5' SECTIONS, 0.25" DIA. GALV. ROD WIRING, 2"x4" MESH, OR APPROVED EQUAL.
4. PANEL HARDWARE: 3/8" DIA. GALV. CARRIAGE BOLTS NUTS AND WASHERS, LENGTH AS REQUIRED.
5. ALL CUTS MADE IN THE FIELD SHALL BE TREATED WITH COPPER NAPHTHENATE WOOD PRESERVATIVE, OR APPROVED EQUAL.
6. ALL MATERIALS TO BE FASTENED WITH 32d GALV. NAILS UNLESS OTHERWISE SPECIFIED.



City of  
Bellevue

TITLE:

**TRAIL - FOOTBRIDGE/BOARDWALK - WITH  
SLEEPER FOOTINGS - SECTION**

DRAWING #:	PK-TR-08A
SCALE:	N.T.S.
REVISION DATE:	03-2021
DEPARTMENT:	PARKS