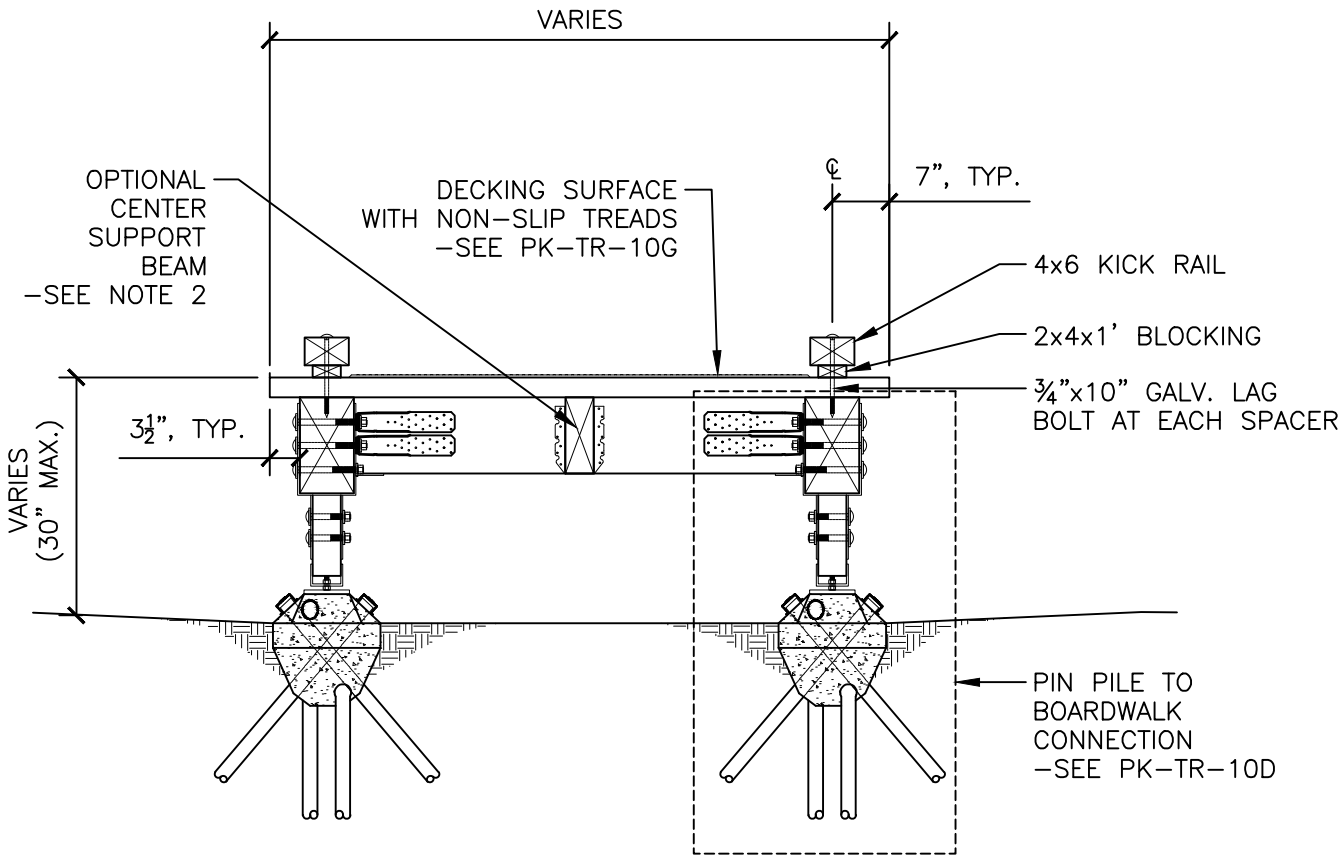


NOTES:

1. UNLESS OTHERWISE SPECIFIED, ALL WOOD TO BE D.F. #2 OR BETTER, PT ACQ/CBA, OR APPROVED EQUAL.
2. USE 4x10 CENTER SUPPORT BEAM WHEN WIDTH IS GREATER THAN 6', TYP.



City of
Bellevue

TITLE:

**TRAIL - FOOTBRIDGE/BOARDWALK - WITH PIN PILE
FOOTINGS - KICK RAIL OPTION - SECTION**

DRAWING #: PK-TR-10A

SCALE: N.T.S.

REVISION DATE: 03-2021

DEPARTMENT: PARKS