

Vasa Creek Area

Lake Washington Watershed (WRIA 8) / State Stream #08-0156



LAND CHARACTERISTICS

Basin Area: 1,268 Total Acres (City area: 5.9%)
 Drainage Jurisdiction(s):

Bellevue: 100.0%	Kirkland: 0.0%
Beaux Arts: 0.0%	Medina: 0.0%
Clyde Hill: 0.0%	Newcastle: 0.0%
Issaquah: 0.0%	Redmond: 0.0%
King County: 0.0%	Renton: 0.0%

Lowest Elevation: 31 Ft
 Highest Elevation: 1,196 Ft

Total Length of Open Channel: 4.7 Miles
 Total Length of Storm Drainage Pipes: 30.1 Miles

POPULATION

Basin Population (2016): 7,498 (5.0% of all Basins)
 Basin Population Density: 3,785 People per Square Mile
 The population density in Bellevue ranges from 1,344 to 9,851 people per square mile.

LAND USE

	Entire Basin	Within Bellevue
Public Right of Way:	21.4 %	21.4 %
Commercial/Office:	5.2 %	5.2 %
Industrial:	0.1 %	0.1 %
Institutional/Government:	4.3 %	4.3 %
Mixed Use/Misc:	4.7 %	4.7 %
Multi-Family	0.3 %	0.3 %
Open Space/Park:	2.8 %	2.8 %
Single Family Residential:	53.8 %	53.8 %
Unknown:	7.3 %	7.3 %

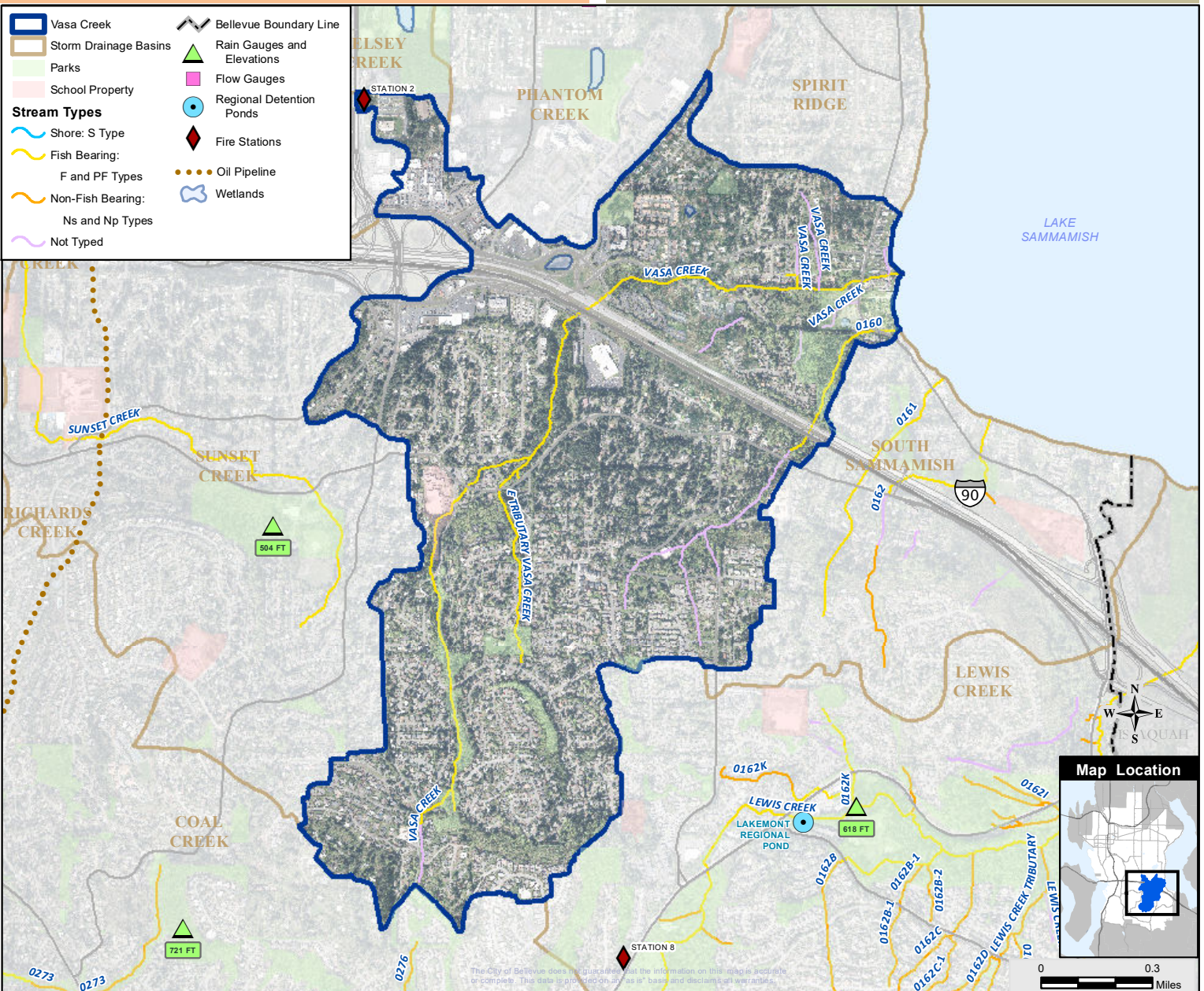
SALMON PRESENT in BASIN

Chinook*+ (Lake only)	Sockeye (Lake only)
Rainbow & cutthroat trout	Kokanee+
Coho+	Steelhead (Lake only)

* Listed Federal Endangered Species
 + City Species of Local Importance (Bellevue Land Use Code 20.25H.150A)

LAND COVER

	Entire Basin	Within Bellevue
Impervious:	39.3 %	39.3 %
Tree Canopy:	45.0 %	45.0 %
Impervious in 100 Ft Stream Buffer:	17.9 %	17.9 %
Tree Canopy in 100 Ft Stream Buffer:	73.5 %	73.5 %



The City of Bellevue does not guarantee that the information on this map is accurate or complete. This data is provided on an "as is" basis and disclaims all warranties.

